



**GY Aquatred  
Chem-60  
\$2.00/pair**

Brown Size 8 = 12", 10 = 12 7/8"  
Camel Size 10 = 12 7/8",  
12 = 13 1/2 ", 14 = 14"



**Hiker Lug Full Sole**

Black: Size  
7 = 12".....\$1.00/pr  
8 = 11 1/2 "...\$1.00/pr



**Fenton  
\$1.00/pair**

Black Size 9 = 12 1/2 "  
Oak Size 8-9 = 12 "



**GY Ranchers  
Chem-60  
\$2.00/pair**

Brown Size  
12 = 13 1/2 ", 14 = 14"  
Camel Size 4 = 11",  
8 = 12 1/4 ", 14 = 14 1/4 "



**GY Traction Air  
\$2.00/pair**

Brown: Size 7 = 11 1/2 ", 9 = 12",  
Camel: Size 8 = 11 3/4 "



**Basket Weave  
\$2.00/pair**

Black Size 10 = 12 3/4 "

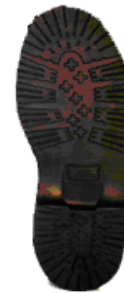


**Shotgun  
\$2.00/pr**

Dark Brown-Size 8=117/8"  
Black Size 16=14 1/2"



**Super Specials!!**



**Mini Lug  
Size 8 Black  
\$1.00/pair**



**Jumbo Rib  
\$2.00/pair**

Natural: Size 8 = 12 1/4 ",  
10 = 12 1/2 ",  
12 = 12 3/4 ", 14 = 13 3/4 "  
Brown: Size 14 = 13 1/2 "  
Black: Size 10 = 13 1/8 "



**GY HardHat  
Chem-605  
\$2.00/pair**

Black Size 8 = 12", 10 = 12 3/4 ",  
12 = 13 1/8", 14 = 14"  
Brown: Size 8 = 11 1/4 ",  
14 = 14", 15 = 14 1/4 "



**CPM 143 FS  
Item # 7093  
Size 10 Black  
Open Stock \$2.00/pr**



**GY Lug Full Sole Oak  
\$2.00/pair**

Size 8 = 11 1/2 ", "9 = 12",  
11 = 13", 12 = 13 1/4 ",  
14 = 14 1/4 ", 15 = 15"



**Oil Proof Full Sole  
JW#7084**

Black Asst Sizes  
Open Stock \$24.00 per  
dz.

**Oil proof full Sole  
JW#7097**

Color : Black Size 8 only  
Open Stock \$1.25/pr



**Maple Crepe Uncut  
Size 16 = 16 3/4 "  
\$1.00/pair**

**J. Weiner & Co.**  
1-800-444-6979 Fax 1-800-999-3883  
Go to our web site: [jweiner.com](http://jweiner.com)